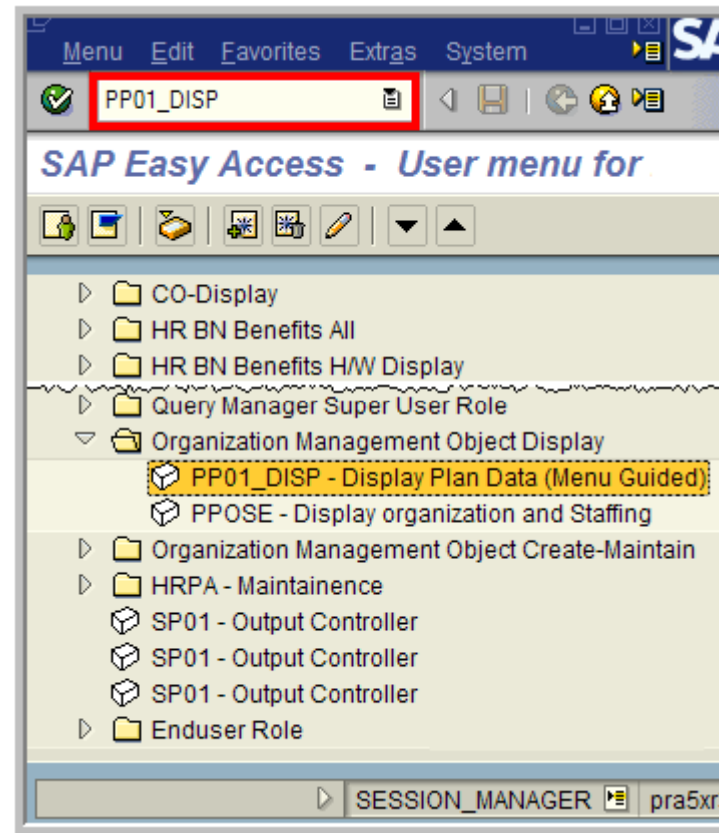


Find the FLSA status and EEO Category for a Job


Type transaction code
PP01_DISP on command bar;
or select this transaction from
Menu.



Select Plan version: Current plan

Select Object type: Job

Type Object ID (Job number): 8 digits

Find the infotype US Job Attributes, then select this infotype. Click  the display icon.

- The EEO category is shown below.

- The FLSA status shown as below.

E - Exempt

N - Non-exempt

